



total pipeline specialists

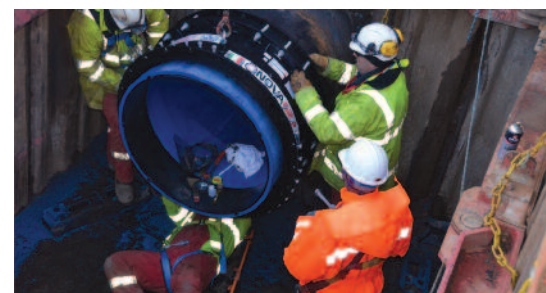
End Restraint Range

Overview & common features of range

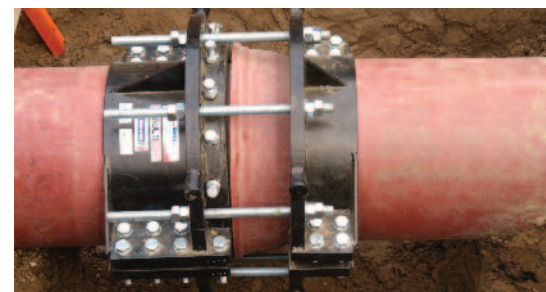
- Universal fit provides full end restraint on Ductile, Cast, Steel & PE (any SDR).
- Standard 30mm tolerance means ease of fit even on out of round pipe.
- No need for heating blankets or re-rounding tools on PE... only a torque wrench.
- Simplifies jointing, reduces fittings required, faster installation.
- Multigrip end restraint fittings can be manufactured as Flange Adaptors, Couplings, Steps, Bends & Tees.
- Utility and framework stocks can be cut by at least 50%.
- Reduces or eliminates the need for concrete thrust blocks and tie bar assemblies.
- New Super-Multigrip 25 bar fitting now available.



Multigrip End Restraint FA 710mm SDR11 PE
Anglian Water - Daventry



1000mm Nova Grips
United Utilities - Vyrnwy Aqueduct



End Restraint Anti Leak Clamps
Anglian Water - Wisbech

Dublin Depot
405a Grants Court
Greenogue Business Park
Rathcoole
Dublin D24 DA06
t. +353 (0) 1 4573900
f. +353 (0) 1 4573863

Lisburn Depot
13a Blaris Industrial Estate
Altona Road
Lisburn BT27 5QB
t. +44 (0) 28 92660000
f. +44 (0) 28 92675000

e. sales@total-pipeline.com
w. www.total-pipeline.com

Innovation in End Restraint, Encapsulation & Repair Products



MULTIGRIP
(300-3000mm diameters)

- Available as Couplings, Step Fittings & Flange Adaptors.
- Totally universal – a single fitting can be used on up to 7 different sizes and types of pipe.
- Up to 75% faster fit than other end restraint systems.



SMARTJOINT
(50-300mm nb diameters)

- Available as Couplings & Adaptors (specials on request).
- Totally universal – can connect upto 8 different types of pipe of differing diameters inc Ductile Iron/Cast Iron/Steel/MoPVC & PE.
- Significant stock reduction – **How many fittings can a single Smartjoint save you?**



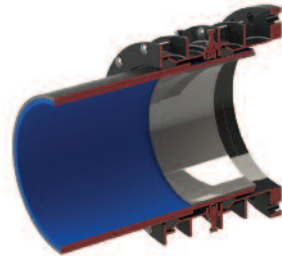
MULTIGRIP Bends, Tees, Specials
(100-3000mm diameters)

- Virtually any item can be made as a one piece fitting with integral end restraint, flanges or standard universal sockets.
- Reduces fittings required and simplifies connections between old & new pipe materials.



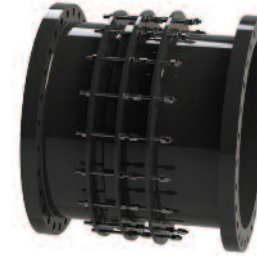
ANGLE-FIT
(300mm - 2000mm diameters)

- Allows connections between misaligned pipes up to 15 degrees in any direction.
- Can be manufactured with flanges / sockets or end restraint grippers.
- Can be manufactured as a bend or tee.
- Can connect and end restrain PE/Ductile/Steel & Cast.



NOVAGRIP
(300-2000mm diameters)

- NOVAGRIP connects existing host pipe and seals and grips PE rehab liner pipe.
- Suitable for swagelining and sliplining applications.
- 30mm tolerance means minimal callipering and ease of installation.
- Can be specially made to suit customer application.



DISMANTLING JOINT

Provides a unique solution for accessing valves and also as linear compensation.



total pipeline specialists

Dublin Depot
405a Grants Court
Greenogue Business Park
Rathcoole
Dublin D24 DA06
t. +353 (0) 1 4573900
f. +353 (0) 1 4573863

Lisburn Depot
13a Blaris Industrial Estate
Altona Road
Lisburn BT27 5QB
t. +44 (0) 28 92660000
f. +44 (0) 28 92675000

e. sales@total-pipeline.com
w. www.total-pipeline.com

