

PLASSON mechanical



PLASSON mechanical fittings offer solutions for connecting PE pipes, used for conveying water and other fluids in urban and inter-urban infrastructure, industrial, mining, landscape, farming as well as optical fibre duct systems.

The fittings are designed to withstand working pressures of up to 16bar, and also include valves which allow the regulation of flow. These fittings are manufactured in diameters ranging from 16mm to 160mm.

7010 Coupler



Code	d	Bag
7010BB0	16	10
7010CC0	20	10
7010DD0	25	10
7010EE0	32	5
7010FF0	40	1
7010GG0	50	1
7010HH0	63	1
87010JJ	75	1
87010KK0	90	1
87010LL0	110	1
7010MM0	125	1
17010PO	160	1

7610 Repair Coupler



Code	d	Bag
7610CC0	20	10
7610DD0	25	10
7610EE0	32	5
7610FF0	40	1
7610GG0	50	1
7610HH0	63	1
87610JJ0	75	1
87610KK0	90	1
87610LL0	110	1
7610MM0	125	1

7110 Reducing Coupler



Code	d	Bag
7110CB0	20 x 16	10
7110DB0	25 x 16	10
7110DC0	25 x 20	10
7110EC0	32 x 20	5
7110ED0	32 x 25	5
7110FD0	40 x 25	1
7110FE0	40 x 32	1
7110GD0	50 x 25	1
7110GE0	50 x 32	1
7110GF0	50 x 40	1
7110HD0	63 x 25	1
7110HE0	63 x 32	1
7110HF0	63 x 40	1
7110HG0	63 x 50	1
87110JG0	75 x 50	1
87110JH0	75 x 63	1
87110KH0	90 x 63	1
87110KJ0	90 x 75	1
87110LK0	110 x 90	1

7120 End Plug



Code	d	Bag
7120C00	20	10
7120D00	25	10
7120E00	32	5
7120F00	40	1
7120G00	50	1
7120H00	63	1
87120J00	75	1
87120K00	90	1
87120L00	110	1

7129 Plug Adaptor



Code	d	Bag
7129C00	20	10
7129D00	25	10
7129E00	32	10
7129F00	40	5
7129G00	50	5
7129H00	63	5

7020 Male Adaptor Metric x MI BSP



Code	d	Bag
7020B00	16 x 3/8"	10
7020B10	16 x 1/2"	10
7020B20	16 x 3/4"	10
7020C10	20 x 1/2"	10
7020C20	20 x 3/4"	10
7020C30	20 x 1"	10
7020D10	25 x 1/2"	10
7020D20	25 x 3/4"	10
7020D30	25 x 1"	10
7020E20	32 x 3/4"	5
7020E30	32 x 1"	5
7020E40	32 x 1 1/4"	5
7020E50	32 x 1 1/2"	5
7020F30	40 x 1"	1
7020F40	40 x 1 1/4"	1
7020F50	40 x 1 1/2"	1
7020F60	40 x 2"	1
7020G30	50 x 1"	1
7020G40	50 x 1 1/4"	1
7020G50	50 x 1 1/2"	1
7020G60	50 x 2"	1
7020H40	63 x 1 1/4"	1
7020H50	63 x 1 1/2"	1
7020H60	63 x 2"	1
7020H70	63 x 2 1/2"	1
87020J60	75 x 2"	1
87020J70	75 x 2 1/2"	1
87020J80	75 x 3"	1
87020K60	90 x 2"	1
87020K70	90 x 2 1/2"	1
87020K80	90 x 3"	1
87020K90	90 x 4"	1
87020L60	110 x 2"	1
87020L80	110 x 3"	1
87020L90	110 x 4"	1

7030 Female Adaptor Metric x FI BSP



Code	d	Bag
7030B10	16 x 1/2"	10
7030B20	16 x 3/4"	10
7030C10	20 x 1/2"	10
7030C20	20 x 3/4"	10
7030C30	20 x 1"	10
7030D20	25 x 3/4"	10
7030D30	25 x 1"	10
7030E20	32 x 3/4"	5
7030E30	32 x 1"	5
7030E40	32 x 1 1/4"	5
7030F30	40 x 1"	1
7030F40	40 x 1 1/4"	1
7030F50	40 x 1 1/2"	1
7030G40	50 x 1 1/4"	1
7030G50	50 x 1 1/2"	1
7030G60	50 x 2"	1
7030H60	63 x 2"	1
87030J60	75 x 2"	1
87030J70	75 x 2 1/2"	1
87030K60	90 x 2"	1
87030K80	90 x 3"	1
87030K90	90 x 4"	1
87030L80	110 x 3"	1
87030L90	110 x 4"	1

7060 Female Adaptor Parallel Thread



Code	d	Bag
7060D20	25 x 3/4"	1
7060D30	25 x 1"	1
7060E30	32 x 1"	1



7040 90° Tee



Code	d	Bag
7040BBB	16	10
7040CCC	20	10
7040DDD	25	5
7040EEE	32	5
7040FFF	40	1
7040GGG	50	1
7040HHH	63	1
87040JJJ	75	1
87040KKK	90	1
87040LLL	110	1
17040PP	160	1

7045 90° Repair Tee



Code	d	Bag
7045CCC	20	10
7045DDD	25	10
7045EEE	32	5
7045FFF	40	1
7045GGG	50	1
7045HHH	63	1

7340 90° Reducing Tee



Code	d	Bag
7340CBC	20 x 16 x 20	10
7340DCD	25 x 20 x 25	5
7340EDE	32 x 25 x 32	5
7340FDF	40 x 25 x 40	1
7340FEF	40 x 32 x 40	1
7340GDG	50 x 25 x 50	1
7340GEG	50 x 32 x 50	1
7340GFG	50 x 40 x 50	1
7340HEH	63 x 32 x 63	1
7340HFH	63 x 40 x 63	1
7340HGH	63 x 50 x 63	1
87340JHJ	75 x 63 x 75	1

7740 90° Enlarging Tee



Code	d	Bag
7740DED	25 x 32 x 25	5

7840 90° Tee

Male Offtake



Code	d	Bag
7840C1C	20 x 1/2" x 20	10
7840C2C	20 x 3/4" x 20	10
7840D1D	25 x 1/2" x 25	5
7840D2D	25 x 3/4" x 25	5
7840E3E	32 x 1" x 32	5
7840F4F	40 x 1 1/4" x 40	1
7840F5F	40 x 1 1/2" x 40	1
7840G4G	50 x 1 1/4" x 50	1
7840G5G	50 x 1 1/2" x 50	1
7840H4H	63 x 1 1/4" x 63	1
7840H5H	63 x 1 1/2" x 63	1
7840H6H	63 x 2" x 63	1

7140 90° Tee

Female Offtake



Code	d	Bag
7140B1B	16 x 1/2" x 16	10
7140B2B	16 x 3/4" x 16	10
7140C1C	20 x 1/2" x 20	10
7140C2B	20 x 3/4" x 16	10
7140C2C	20 x 3/4" x 20	10
7140D1D	25 x 1/2" x 25	5
7140D2C	25 x 3/4" x 20	5
7140D2D	25 x 3/4" x 25	5
7140D3D	25 x 1" x 25	5
7140D4D	25 x 1 1/4" x 25	5
7140E2E	32 x 3/4" x 32	5
7140E3D	32 x 1" x 25	5
7140E3E	32 x 1" x 32	5
7140E4E	32 x 1 1/4" x 32	5
7140E5E	32 x 1 1/2" x 32	5
7140F3F	40 x 1" x 40	1
7140F4F	40 x 1 1/4" x 40	1
7140F5F	40 x 1 1/2" x 40	1
7140F6F	40 x 2" x 40	1
7140G5G	50 x 1 1/2" x 50	1
7140G6G	50 x 2" x 50	1
7140H4H	63 x 1 1/4" x 63	1
7140H5H	63 x 1 1/2" x 63	1
7140H6H	63 x 2" x 63	1
87140J6J	75 x 2" x 75	1
87140J7J	75 x 2 1/2" x 75	1
87140J8J	75 x 3" x 75	1
87140K8K	90 x 3" x 90	1
87140L9L	110 x 4" x 110	1

7140 90° Slip Tee

Female Offtake



Code	d	Bag
7140G50	50 x 1 1/2" x 50	1
7140H40	63 x 1 1/4" x 63	1

7050 90° Elbow



Code	d	Bag
7050BB0	16	10
7050CC0	20	10
7050DD0	25	10
7050EE0	32	5
7050FF0	40	1
7050GG0	50	1
7050HH0	63	1
87050JJ0	75	1
87050KK0	90	1
87050LL0	110	1
17050P0	160	1

7510 90° Reducing Elbow



Code	d	Bag
7510DC0	25 x 20	10

7460 45° Elbow



Code	d	Bag
7460EE0	32	5
7460FF0	40	1
7460GG0	50	1
7460HH0	63	1
87460KK0	90	1
87460LL0	110	1

7750 Wall Plate Elbow PP



Code	d	Bag
7750C10	20 x 1/2"	5
7750D20	25 x 3/4"	5

9055 Wall Plate Elbow DZR



Code	d	Bag
9055C10	20 x 1/2"	1
9055D20	25 x 3/4"	1

7450 45° Elbow

Male Offtake



Code	d	Bag
7450C10	20 x 1/2"	10
7450C20	20 x 3/4"	10

7150 90° Elbow

Female Offtake



Code	d	Bag
7150B10	16 x 1/2"	10
7150C10	20 x 1/2"	10
7150C20	20 x 3/4"	10
7150D10	25 x 1/2"	10
7150D20	25 x 3/4"	10
7150D30	25 x 1"	10
7150E20	32 x 3/4"	5
7150E30	32 x 1"	5
7150E40	32 x 1 1/4"	5
7150F30	40 x 1"	1
7150F40	40 x 1 1/4"	1
7150F50	40 x 1 1/2"	1
7150F60	40 x 2"	1
7150G30	50 x 1"	1
7150G40	50 x 1 1/4"	1
7150G50	50 x 1 1/2"	1
7150G60	50 x 2"	1
7150H40	63 x 1 1/4"	1
7150H50	63 x 1 1/2"	1
7150H60	63 x 2"	1
87150J60	75 x 2"	1
87150J80	75 x 3"	1

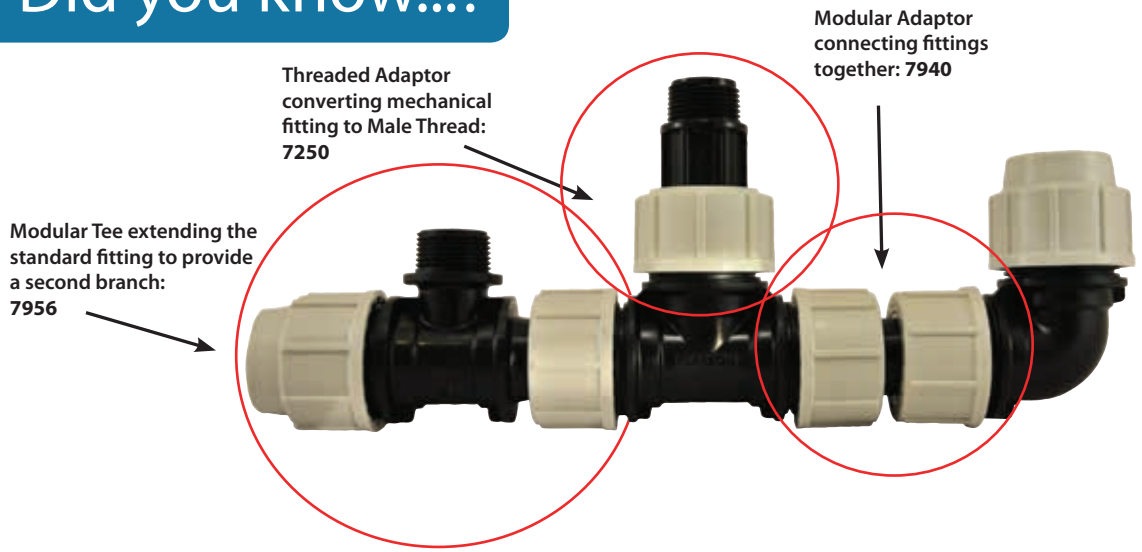
7850 90° Elbow

Male Offtake



Code	d	Bag
7850C10	20 x 1/2"	10
7850C20	20 x 3/4"	10
7850D10	25 x 1/2"	10
7850D20	25 x 3/4"	10
7850D30	25 x 1"	10
7850E30	32 x 1"	5
7850F30	40 x 1"	1
7850F40	40 x 1 1/4"	1
7850F50	40 x 1 1/2"	1
7850G30	50 x 1"	1
7850G40	50 x 1 1/4"	1
7850G50	50 x 1 1/2"	1
7850H40	63 x 1 1/4"	1
7850H50	63 x 1 1/2"	1
7850H60	63 x 2"	1
87850K80	90 x 3"	1
87850L90	110 x 4"	1

Did you know...?



7940 Modular Adaptor for close/tight assemblies



Code	d	Bag
7940C00	20	1
7940D00	25	1
7940E00	32	1
7940F00	40	1
7940G00	50	1
7940H00	63	1

7956 Modular Tee Male Offtake for building manifolds



Code	d	Bag
7956E3E	32 x 1" x 32	1
7956F4F	40 x 1 1/4" x 40	1
7956F5F	40 x 1 1/2" x 40	1
7956G4G	50 x 1 1/4" x 50	1
7956G5G	50 x 1 1/2" x 50	1
7956G6G	50 x 2" x 50	1
7956H4H	63 x 1 1/4" x 63	1

7250 Threaded Adaptor convert std fitting to MI BSP



Code	d	Bag
7250255	25 x 1/2"	1
7250257	25 x 3/4"	1
7250325	32 x 1/2"	1
7250327	32 x 3/4"	1
7250321	32 x 1"	1
7250405	40 x 1 1/2"	1
7250501	50 x 1"	1
7250508	50 x 1 1/4"	1
7250505	50 x 1 1/2"	1
7250502	50 x 2"	1
7250631	63 x 1"	1
7250635	63 x 1 1/2"	1
7250632	63 x 2"	1
7250625	63 x 2 1/2"	1
7250715	75 x 1 1/2"	1
7250752	75 x 2"	1
7250725	75 x 2 1/2"	1
7250753	75 x 3"	1



7810 Coupler with Riser



Code	d	Bag
7810G2G	50 x 3/4" x 50	1
7810G3G	50 x 1" x 50	1
7810H3H	63 x 1" x 63	1
7810J2J	75 x 3/4" x 75	1

7640 45° Tee



Code	d	Bag
7640HHH	63	1
87640KKK	90	1
87640LLL	110	1

7550 Y-Fitting



Code	d	Bag
7550CC2	20 x 20 x 3/4"	10
7550DD2	25 x 25 x 3/4"	5

7350 90° Spigot Elbow



Code	d	Bag
7350GF0	50 x 40	1
7350GG0	50 x 50	1
7350HG0	63 x 50	1

7540 Cross Threaded Female Offtake



Code	d	Bag	£ ea
7540C20	20 x 3/4"	1	

7220 Compression Flange Adaptor



Code	d	Bag
7220G50	50 x 1 1/2"	1
7220G60	50 x 2"	1
7220H60	63 x 2"	1
87220J70	75 x 2 1/2"	1
87220K80	90 x 3"	1
87220K90	90 x 4"	1
87220L90	110 x 4"	1
7220MM0	125 x 5"	1
7220M00	125 x 6"	1
17220PM	160 x 5"	1
17220PO	160 x 6"	1

7236 Spigot Flange Adaptor



Code	d	Bag
7236G50	50 x 1 1/2"	1
7236G60	50 x 2"	1
7236H60	63 x 2"	1
7236H70	63 x 2 1/2"	1
87236J60	75 x 2"	1
87236J70	75 x 2 1/2"	1
87236J80	75 x 3"	1
87236K70	90 x 2 1/2"	1
87236K80	90 x 3"	1
87236K90	90 x 4"	1
87236L80	110 x 3"	1
87236L90	110 x 4"	1
87236LL0	110 x 5"	1
17230PM	160 x 5"	1
17230PO	160 x 6"	1

7228 EPDM Flange Gasket



Code	d	Bag
7228550	1 1/2"	1
7228660	2"	1
7228770	2 1/2"	1
7228880	3"	1
7228MM0	4"	1
7228NN0	5"	1
7228PP0	6"	1
7228QQ0	200/225 x 8"	1
7228SS0	250/280 x 10"	1
7228TT0	315 x 12"	1

BLACK 2 BLUE™

Connecting Imperial to Metric

7418 Coupler Metric to Imperial



Code	d	Bag
74181C0	1/2" x 20	10
74181CC	3/8" x 20	10
74181D0	1/2" x 25	10
74181DC	3/8" x 25	10
74182D0	3/4" x 25	10
74183E0	1" x 32	5
74184E0	1 1/4" x 32	1
74184G0	1 1/4" x 50	1
74185G0	1 1/2" x 50	1
74185H0	1 1/2" x 63	1
74186H00	2" x 63	1

1001M Coupler Metric to Imperial



Code	d	Bag
1001M6020005	20 x 1/2"	5
1001M6025005	25 x 1/2"	5
1001M6025007	25 x 3/4"	5
1001M6032010	32 x 1"	5

7478 90° Elbow Metric to Imperial



Code	d	Bag
74781C0	1/2" x 20	10
74781D0	1/2" x 25	10
74782D0	3/4" x 25	10
74783E0	1" x 32	5

1005M 90° Elbow Metric to Imperial



Code	d	Bag
1005M6025005	25 x 1/2"	5
1005M6025007	25 x 3/4"	5

Adaptors to convert Metric Fittings

7786 Class C Low Density BS1972/67



Code	Nominal Size	Fitting Size
7786004	3/8"	20
7786005	1/2"	20
7786007	3/4"	25
7786010	1"	32
7786012	1 1/4"	50
7786015	1 1/2"	50
7786020	2"	63

7787 Class D Low Density BS1972/67



Code	Nominal Size	Fitting Size
7787005	1/2"	20
7787007	3/4"	25
7787010	1"	32
7787012	1 1/4"	50
7787015	1 1/2"	50

7788 Class C High Density BS3284/67



Code	Nominal Size	Fitting Size
7788005	1/2"	20
7788007	3/4"	25
7788010	1"	32
7788012	1 1/4"	50
7788015	1 1/2"	50
7788020	2"	63

7789 Class D High Density BS3284/67



Code	Nominal Size	Fitting Size
7789004	3/8"	20
7789005	1/2"	20
7789007	3/4"	25
7789010	1"	32
7789012	1 1/4"	50
7789015	1 1/2"	50
7789020	2"	63

7995 Normal Gauge IS 134:1977



Code	Nominal Size	Fitting Size
7995005	1/2"	20
7995007	3/4"	25
7995010	1"	32
7995012	1 1/4"	50
7995015	1 1/2"	50
7995020	2"	63

7996 Heavy Gauge IS 134:1977



Code	Nominal Size	Fitting Size
7996005	1/2"	20
7996007	3/4"	25
7996010	1"	32
7996012	1 1/4"	50
7996015	1 1/2"	50

PLASSON

slide n seal

Universal Slip Coupler

The new innovative solution for pipe repair.

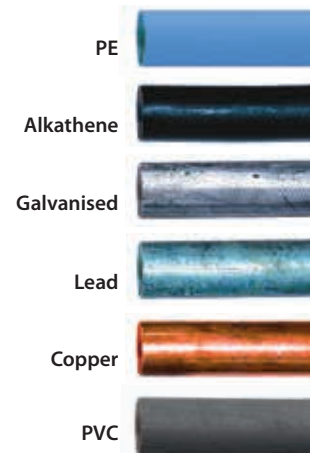
1761 Universal Slip Coupler

Universal x Universal



Code	d	Bag
176100024028	24-28 x 24-28	1
176100031035	31-35 x 31-35	1
176100040043	40-43 x 40-43	1
176100048051	48-51 x 48-51	1
176100060064	60-64 x 60-64	1

- Zero force pipe insertion - can slide freely back and forth.
- Suits a variety of pipe materials and a range of diameters.
- Large section 'O' ring seal - compensates for poor pipe quality.
- Long sealing area - can bridge over damaged section or gap between pipes.
- Seal compression increases as pressure increases.
- Robust PP body and nut - immense impact strength and stress resistance.
- Total reliability - PN16, 50 year design life.



PLASS4

Metric x Universal

Plass4 is a universal pipe fitting which connects metric polyethylene to a wider range of pipe types: including imperial polyethylene (alkathene), copper (table X & Y), lead, galvanised steel, PVCu and poly-york.

Plass4 is easy to use with no specialist tools needed to complete the joint. The fitting is made from virgin polypropylene which makes it extremely strong and long-lasting. Plass4 fittings have a design life of 50 years, the same as our standard fittings. Due to its versatility, only a few fitting sizes are needed to cover all pipes from 15mm to 50mm.



77017 Universal Coupler Plass4



Code	d	Bag
77017251	25 x 15-22	1
77017252	25 x 20-27	1
77017253	25 x 27-35	1
77017500	32 x 20-27	1
77017323	32 x 27-35	1
77017504	50 x 35-50	1

77057 Universal Elbow Plass4



Code	d	Bag
77057251	25 x 15-22	1
77057252	25 x 20-27	1
77057253	25 x 27-35	1

PLASSON mechanical

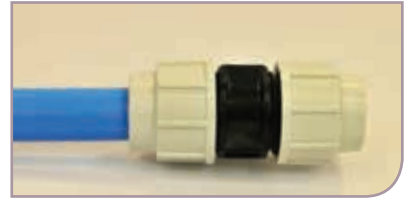
Metric Fittings 20mm - 110mm and Imperial Fittings 1/2" - 2"



Insert liner into pipe (metric 20mm-63mm only) and slacken nut until half the thread is visible.



Push pipe into body, through the nut, split ring, and 'O' ring.



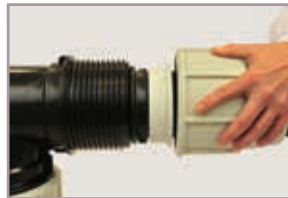
Tighten nut firmly: Hand tight on pipe 20mm (3/4") - 32mm (1"), on pipe 40mm (1 1/4") and above use a PLASSON wrench.

Note: For diameters 40mm and above, chamfering and lubrication of the pipe will ease insertion (use silicon lubricant). Metric fitting shown for illustrative purposes. Imperial fittings have black nuts.

Metric Fittings - 125mm



Draw the nut, collars, and 'O' ring over the end of the pipe to a distance of approx. 250mm (put the white split ring to one side for later use).



Insert the pipe into the body of the fitting until it meets the interior stop. Then draw the 'O' ring and collars close to the body of the fitting.



Tighten the nut with a PLASSON wrench until the 'O' ring and collars enter the fitting and reach their end position. Unscrew nut from fitting.



Open the white split ring and mount onto pipe with larger side against the collar ensuring that both parts meet the body of the fitting. Screw the nut tightly onto the fitting using a PLASSON wrench.

Metric Fittings - 160mm

- Undo and take out nuts & bolts.
- Take the two shell halves apart, remove the exposed sleeve & 'O' ring and place over the pipe end.
- Push the body of the fitting completely home over the pipe end.
- Place the two shell halves with grip rings over the pipe & fitting body.
- Insert bolts, washers, and nuts and tighten until the shells are in contact with each other.



Plas4 Universal Fittings



Prepare the pipe by removing any unsound material adhering to the pipe then cut and de-burr pipe as necessary.



Slide the universal end of the fitting onto the pipe end until it reaches the internal fins and a resistant point is felt. NOTE: DO NOT force pipe end past the internal fins as this may impair joint.



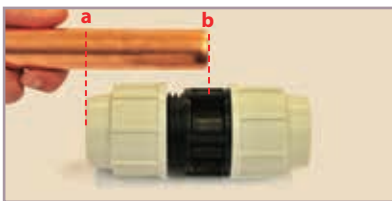
Tighten the black nut using a PLASSON wrench or similar. Assemble the Metric PE joint as per the standard fitting instructions.

Note: If reusing the fitting, ensure the metal teeth are located in the grip ring, and the pipe end does not pass the location of the internal fins.

Copper Adaptor Set table X and Y (7438)



Remove nut from fitting and discard white split ring (except 35, 42, and 54mm copper, where the white split ring is used as a spacer). Push black rubber seal into fitting body and assemble components in the order shown above.



Place nut onto fitting leaving half the thread visible. Cut the copper pipe square and remove all burrs and sharp edges. Mark pipe at "a" when the pipe end reaches the centre of the body of the fitting, as shown by "b" above.



Push and twist the pipe through the nut, adaptor and metal ring into the body of the fitting, until the mark is in line with the end of the nut as shown. Tighten the nut with a PLASSON wrench.

Note: Lubrication of the pipe end will ease insertion (use silicon lubricant).

Imperial & Irish Pipe Adaptor (7786 / 7787 / 7788 / 7789 / 7995 / 7996)



Remove nut from fitting and discard white split ring (unless using 1 1/2" pipe). Mount nut on pipe and assemble red split ring flush with the pipe end (reuse white split ring for 1 1/2" pipe).



Push the barbed end of the adaptor into the pipe until it meets the stop. Then push the plain end of the adaptor into the fitting until it meets the stop.



Screw nut tightly towards the body of the fitting. Use a PLASSON wrench for 1" pipe and above.

Universal Pipe Adaptor (7896/7898)



Prepare pipe by ensuring that the end is free from grease and roughen outer surface with wire wool or similar. Remove nut from end of fitting and mount onto pipe, discard white split ring.

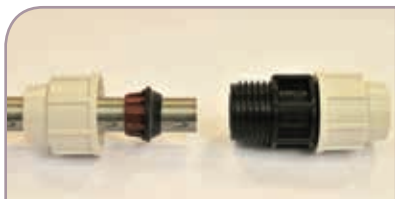


Push adaptor into fitting to the stop. Also push and twist the pipe into the fitting until it meets the internal stop.



Screw the nut tightly towards the body of the fitting. Final tightening with a PLASSON wrench is essential. **The installations MUST be anchored against end loading.**

Lead Adaptor (7782)



Remove nut from fitting and discard white split ring. Mount nut onto pipe followed by brown split ring and seal ring.



These components should be positioned 20mm from the pipe end.

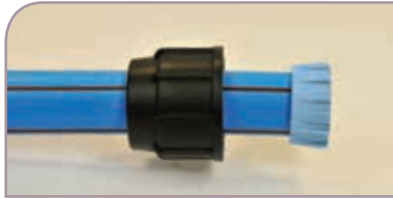


Push pipe into the body of the fitting and tighten firmly with a PLASSON wrench (it is important that the pipe is NOT pushed fully up to the stop inside the fitting).

Note: This product seals on the outside of the pipe and it is therefore important that the external part of the pipe (where the seal is made) is in good condition. If external pipe is of poor quality it may be preferable to use the Plass4 Universal fitting.

PLASSON mechanical

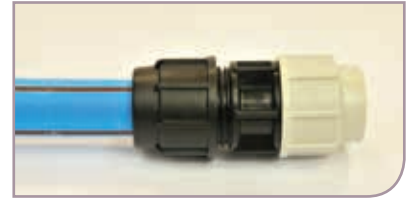
PlasShield Adaptor



Remove nut and grip ring from fitting and discard grey nut. Mount black nut onto the pipe and assemble grip ring flush with the pipe end (discard white grip ring and use grey grip ring if provided).



Push the barbed end of the adaptor into the pipe until it meets the stop. Then push the plain end of the adaptor into the fitting until it meets the stop.



Screw nut tightly towards the body of the fitting using a PLASSON wrench.

For underground installations wrap the whole fitting and adjacent pipe with a self adhesive aluminium foil barrier tape (40 microns thick) ensuring a 50% overlap of the tape and that 50-100mm length of pipe either side of the fitting is covered. In addition, the foil taped fitting should be protected with a self adhesive waterproof tape or petrolatum tape (Denso).

Note: When PlasShield is installed in accordance with the above instructions, it provides resistance to chemical permeation. PlasShield does **NOT** guarantee absolute resistance. Applications may have rules, regulations and requirements including those of the local water company. It is the installer's sole responsibility to enquire as to the existence of such rules, regulations and requirements and to implement them fully.

Internal Water Meter Manifold (3510)



Cut Copper pipe square and remove all burrs and sharp edges.



Twist the pipe into the fitting through the rubber 'O' ring to the stop.



Tighten thoroughly using a PLASSON wrench.

Note: For Copper (table X) only - above ground use. Also the metal grip ring **MUST** be replaced if fitting is re-used.

Self Tapping Swivel Tee

- Insert the bolts through the lower part of the saddle and lock them in position using the restraining clip.
- Place the lower part of the saddle on the underside of the pipe and place the upper part onto the bolts. Ensure that the EPDM seal is positioned correctly in the groove.
- Rotate the outlet to its desired position, hold and tighten the retaining nut until the outlet is locked in place. **DO NOT over tighten.**
- Connect the service pipe to the outlet following the standard mechanical PLASSON fitting instructions.
- Remove the cap and screw the cutter (using the taper assembly tool) clockwise into the main. **NOTE:** When the main is penetrated a reduction in torque is felt followed by an increase in torque as the lower stop is met. **DO NOT continue to screw after this point.**
- Unscrew the cutter anticlockwise back to the upper stop. This will release the flow of water into the service pipe. Replace the cap.



Note: The cutter can be used in future to close the water supply by screwing it back into the main.